

THIS DRAWING IS UNPUBLISHED.

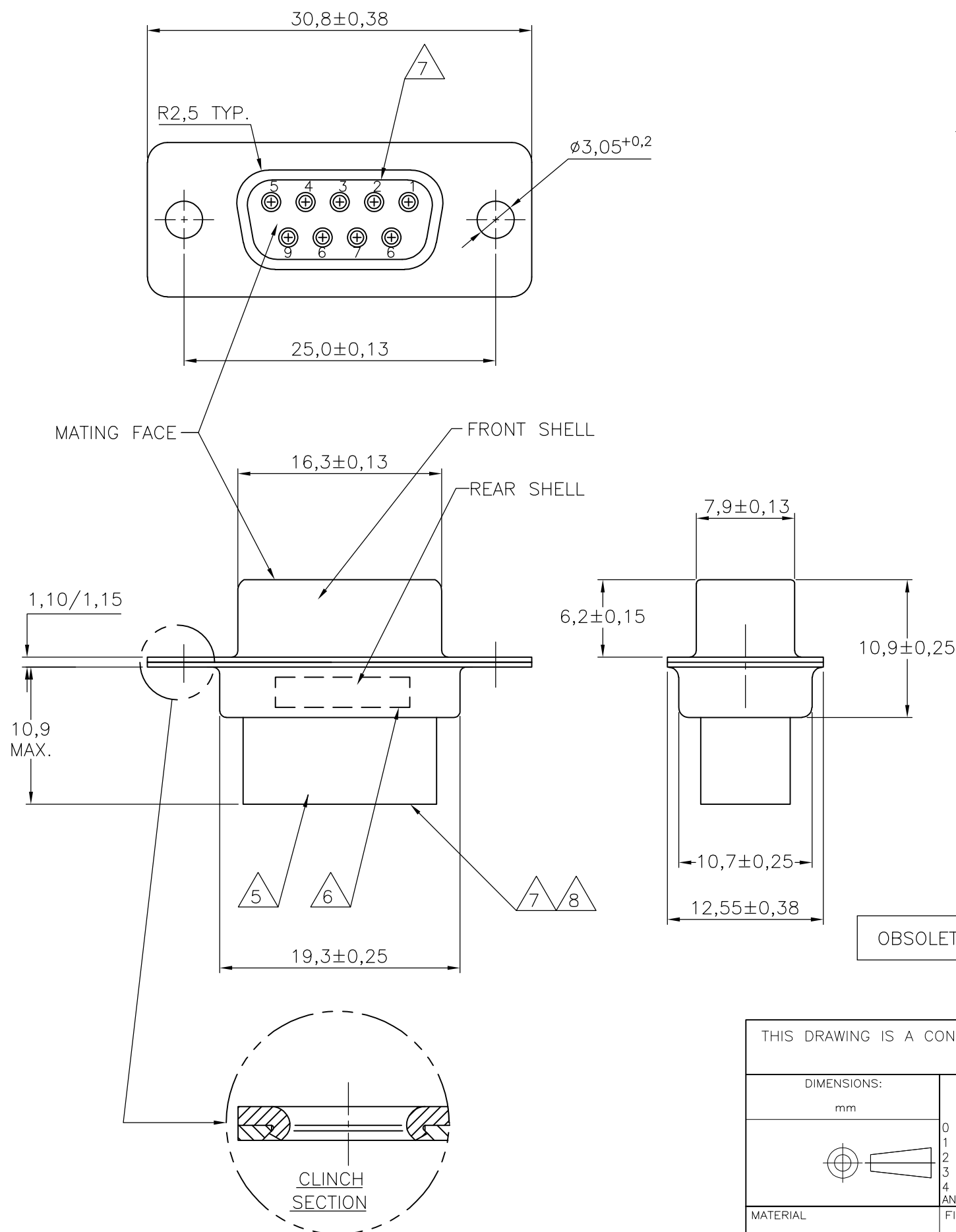
RELEASED FOR PUBLICATION

© COPYRIGHT - By -

ALL RIGHTS RESERVED.

REVISIONS

P	LTR	DESCRIPTION	DATE	DWN	APVD
	N	REVISED PER ECO-16-001693	29AUG2016	AP	DG



NOTES:

- THIS RECEPTACLE ACCEPTS SIZE 20 REC. CONTACTS.
 - MAXIMUM WIRE INSULATION RECOMMENDED FOR USE WITH THIS RECEPTACLE IS 1,73 DIA. MAX..
 - RETENTION TINES ARE AN INTEGRAL PART OF INSERT.
 - FOLLOWING INSERTION/REMOVAL TOOLS ARE RECOMMENDED FOR USE WITH THESE CONNECTORS:
 - 32-28AWG/28-24AWG CONTACTS
 - 91067-3 INSERTION/REMOVAL
 - 726363-1 INSERTION ONLY
 - 24-20AWG CONTACTS
 - 726363-1 INSERTION ONLY
 - 726364-1 REMOVAL ONLY
- 5 INSERTS: GLASSFILLED SELF-EXTINGUISHING PBT, COLOR BLACK.
- 6 TE, TE CONNECTIVITY PARTNUMBER AND DATE CODE; INK STAMPED.
- 7 RAISED CAVITY IDENTIFICATION 0,8 HIGH.
- 8 RAISED CAVITY IDENTIFICATION NUMBERS ON WIRE SIDE ARE WHITENED FOR 164531-9.

OBSOLETE	BRIGHT TIN	BRIGHT TIN	STEEL	164531-9 $\triangle 8$
	BRIGHT TIN	BRIGHT TIN	STEEL	164531-4
	PLATING FRONT SHELL	PLATING REAR SHELL	MATERIAL SHELLS	PART NUMBER

THIS DRAWING IS A CONTROLLED DOCUMENT.		DWN D. KESSLER 11FEB99	STE TE Connectivity		
DIMENSIONS: mm		CHK W. SOOMERS			
TOLERANCES UNLESS OTHERWISE SPECIFIED:		APVD W. SOOMERS	NAME 9 POS HDP-20 RECEPTACLE CONNECTOR SIZE 1		
0 PLC $\pm -$		PRODUCT SPEC	-		
1 PLC $\pm 0,2$		APPLICATION SPEC	-		
2 PLC $\pm -$		WEIGHT	SIZE	CAGE CODE	DRAWING NO
3 PLC $\pm -$		0.000000	A3	-	C-164531
4 PLC $\pm -$			RESTRICTED TO		
ANGLES $\pm 2'$			-		
FINISH			SCALE		
-			NTS		
		CUSTOMER DRAWING		SHEET	REV
				1 OF 1	N